

# PIPELINED FUGUES



"All software development is a footnote to J.S. Bach.

Conversations between independent voices conducted in accordance with the sole ineluctable modality - Time."

*Sean McGrath*

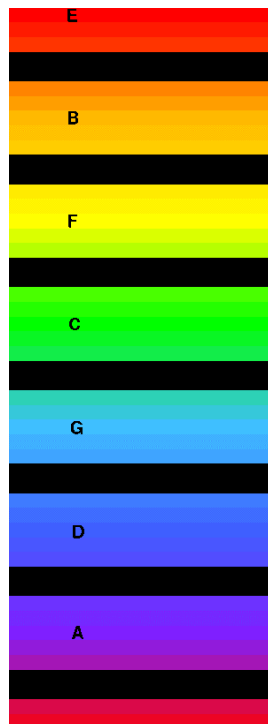


Prelude = Schema

Fugue = Application



- E Red
- B Orange
- F Yellow
- C Green
- G Blue
- D Indigo
- A Violet

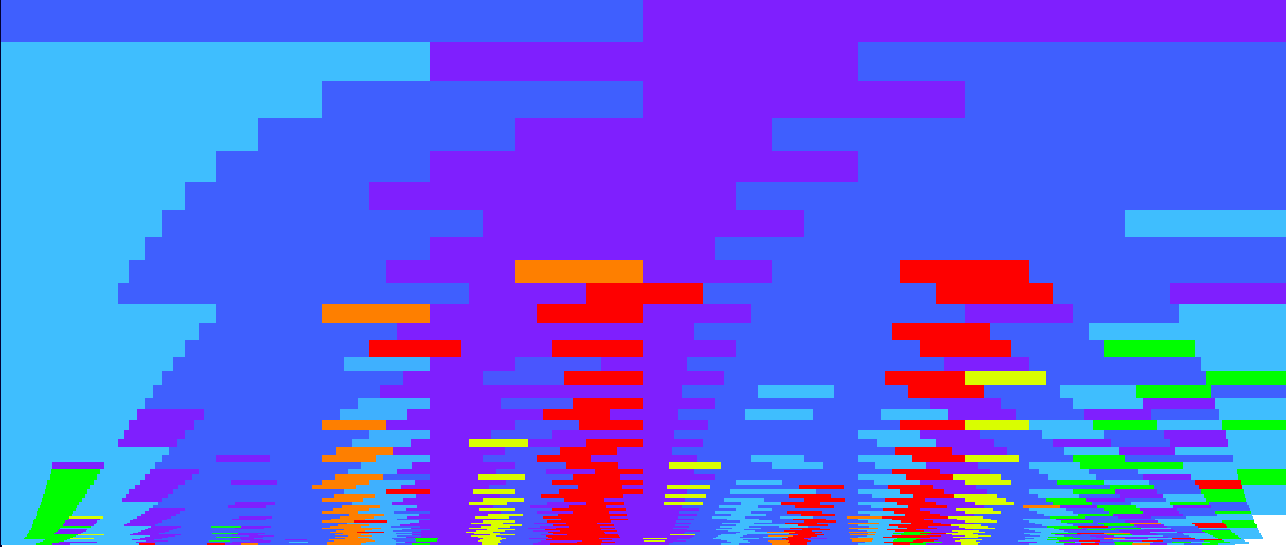


- Colour indicates **keys**.
- Each colour is a Schema. Schemas inherit from each other.
- An XML doc (musical theme) is mainly based on one schema.

luminas

# PRELUDE

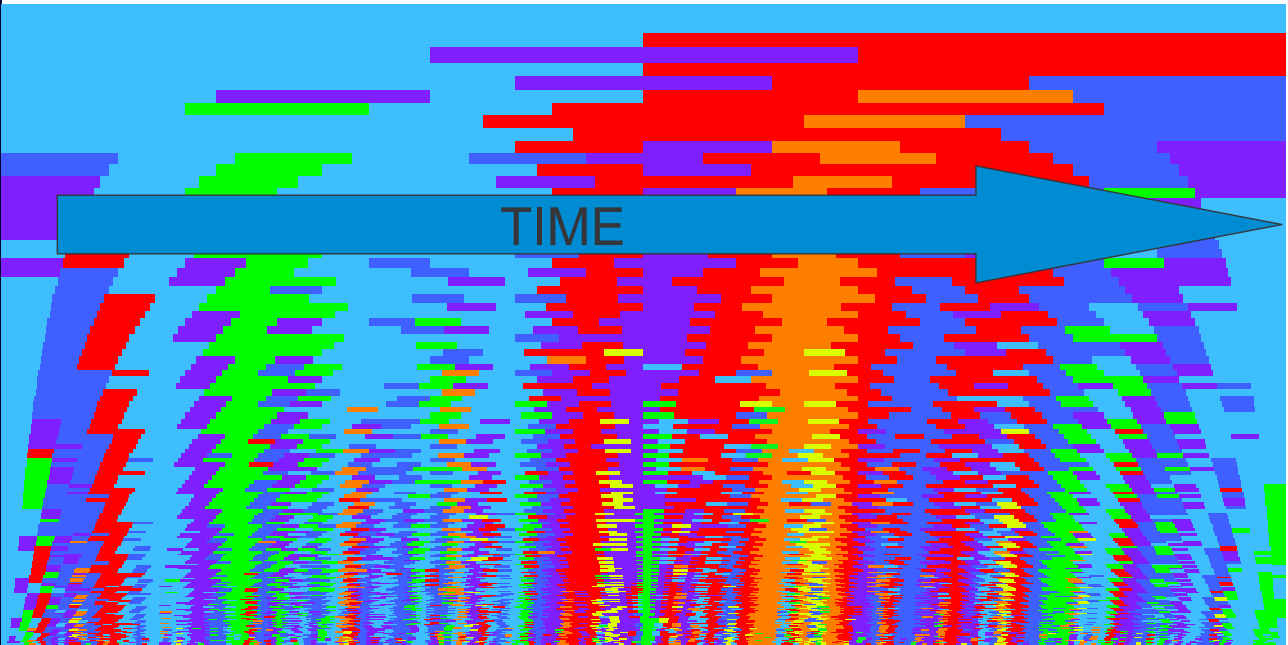
<xs:schema xmlns:xs="http://www.bach.org/prelude">



the xml business alliance

luminas

# FUGUE



the xml business alliance

luminas

# Elizabeth Harington – Prelude 15



the xml business alliance

luminas

# Elizabeth Harington - Fugue 15



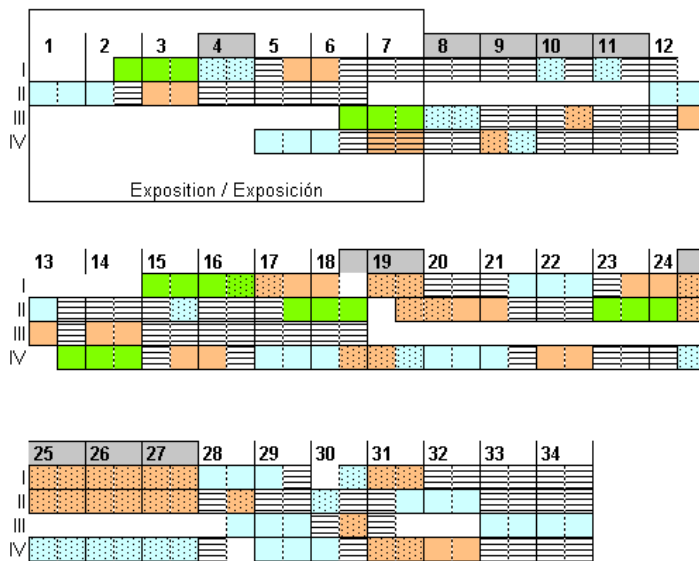
the xml business alliance

- Subject (XML doc) is exposed.
- Countersubject (2<sup>nd</sup> XML doc).



- Aggregation.
- Transformations.





- subject
- countersubject
- response/aggregation
- episode / transformation
- serialisation

- A prelude is a schema
- A fugue is a series of:
  - Source documents
  - Aggregations
  - Transformations
  - Serialisations



"Evolution under the influence of the new replicators – memic evolution- is in its infancy. It is manifested in the phenomena that we call cultural evolution. Cultural evolution is many orders of magnitude faster than DNA-based evolution."

Richard Dawkins, *The Blind Watchmaker*